

ICD-10 Overview



EL PASO FIRST
Health Plans inc.

Overview & ICD-10-PCS

Sonia Lopez, BSHM, CPC

Director of Claims



EL PASO FIRST
Health Plans *inc.*

Implementation Date

The HHS Ruling

January 16, 2009, the Department of Health and Human Services published a ruling

The 10th Revision of the ICD-CM be adopted to replace the ICD-9 diagnosis codes set

and

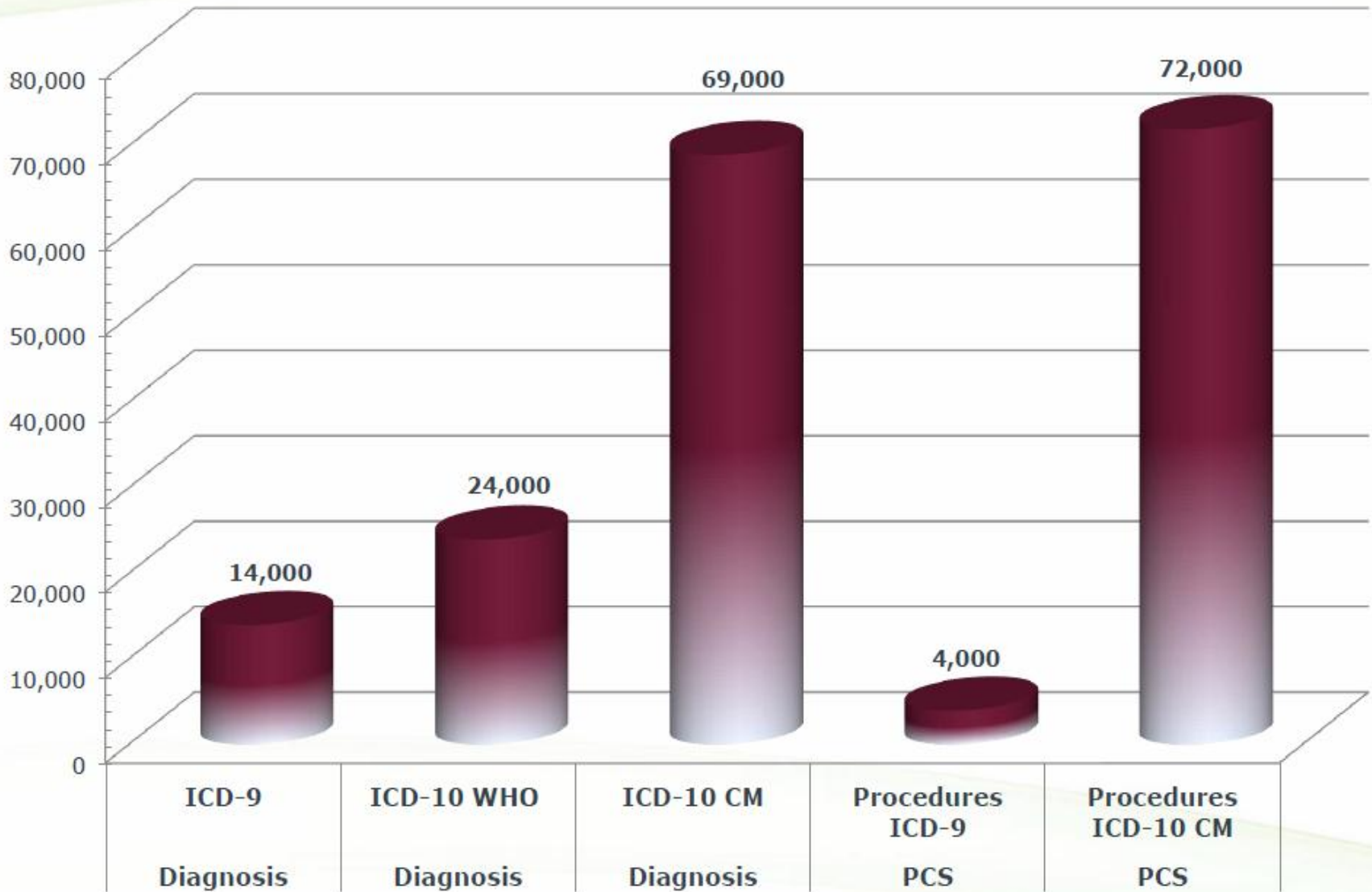
The ICD-10-PCS be adopted to replace the ICD-9 procedure code set for inpatient hospital coding.

The implementation date for the ICD-10 Code Set Is ~~October 1, 2013~~ October 1, 2014 (pending final ruling) for all covered entities.

- The World Health Organization (WHO) adopted ICD-10 in 1990. Since then, 136 countries have adopted ICD-10. The United States still uses ICD-9.

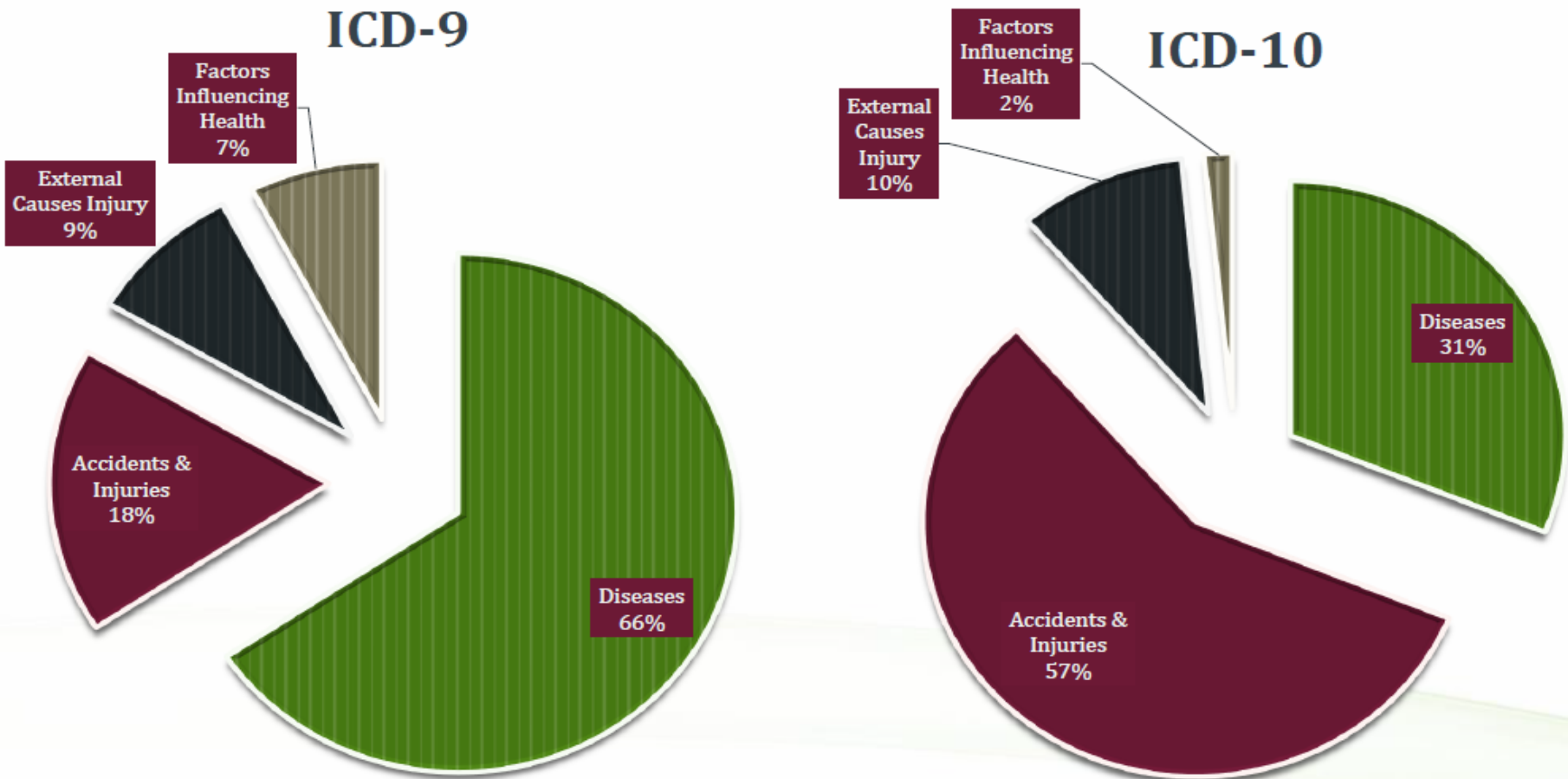


ICD-10 Code Count Comparison



Compare ICD-9 to ICD-10 Diagnosis Codes

Compare ICD-9 to ICD-10 Diagnosis Codes



Project Approach

ICD-10 Implementation Project Approach



➤ Project Planning

- Gathering Business Requirements

➤ Project Team Training

- Determine Integration Methodology
- Identify & Document ICD Impact

➤ System Upgrades

- Configuration
- Interface Development

Internal Testing

- Integrated Internal Testing
- Training Preparation

External Testing

- Trading Partner Testing
- User Training
- Parallel Production Testing

SEVEN STEPS to Plot Your Course

- 1. LEVERAGING a Team and Creating a Business Plan**
- 2. REVIEWING Documentation**
- 3. PERFORMING a Gap Analysis**
- 4. UPDATING Technology**
- 5. GENERATING Support**
- 6. PROVIDING Targeted Education**
- 7. TESTING and Monitoring for Success**



Coder's Roadmap to ICD-10

Below is a full curriculum to prepare coders for the Oct. 1, 2014 implementation of ICD-10. All AAPC members and industry coders are strongly encouraged to consider all steps in the plan as each one provides the foundation for the next.

ICD-10 TIMELINE

2012

Step 1

ICD-10-CM Implementation Training

- Everything you need to know to implement ICD-10-CM in your practice
- Areas of ICD-10-CM impact, working with vendors and GEMS
- Documentation challenges of ICD-10-CM
- Templates, tools and checklists to simplify the transition
- 16 hours

Step 2

ICD-10-CM Anatomy and Pathophysiology Training

- Advanced training for increased specificity requirements
- How to identify the appropriate diagnosis or condition
- Key areas of challenge posed in ICD-10-CM
- 14 hours

2013

Step 3

PHASE I ICD-10-CM Code Set Training

- General code set training
- Complete guidelines with ICD-10-CM hands-on exercises
- Recommend prior to PHASE II Specialty Code Set Training
- 16 hours
- Available 2nd Quarter, 2013

2014

Step 4

PHASE II ICD-10-CM Specialty Code Set Training

Multi-Specialty or Specialty Specific

- Multi-specialty or single-specialty
- Advanced, real-world, hands-on coding
- 4 - 8 hours
- Available January, 2014

Step 5

ICD-10 Proficiency Assessment

- 75 questions
- Open book, online, unproctored, use any resource available
- Two attempts to pass over a two year window (Oct. 1, 2013 – Sept. 30, 2015)

ICD-10 Implementation

OCTOBER 1, 2014



Learn more at

www.aapc.com/icd-10coder

ICD-10-CM Helpful Links

ICD-10-CM Resource Material

1. *ICD-10-CM Official Guidelines for Coding and Reporting – CMS*
2. www.innerbody.com, Human Anatomy Education Site, Copyright (c) 1999 - 2011 HowToMedia, Inc.
3. www.Wikipedia.org
4. <http://medical-dictionary.thefreedictionary.com>
5. Free Online ICD-9 Look-up - <http://icd9cm.chrisendres.com>
6. <http://emedicine.medscape.com/article/412956-overview>
7. <http://www2.mbusd.org/staff/pware/humanbody.htm>
8. <http://comminutedfracture.info/>
9. <http://www.orthopaedia.com/display/Clerkship/Fractures+in+Children>
10. <http://www.icd10data.com> The Free 2012 ICD-10 Medical Online Coding & GEMS Tool
11. <http://www.aapc.com/ICD-10/resources.aspx> Free Online ICD Backward & Forward Mapping Tool
12. <http://www.anatomyarcade.com/index.html> Free Online Games and Anatomy Illustrations
13. <http://www.getbodysmart.com/index.htm> Free Online Anatomy Resources
14. <http://www.bartleby.com/107/> The free online version of the famous Gray's Anatomy of the Human Body (20th edition), with complete text and illustrations.
15. <http://thinkanatomy.com/> Online Free Anatomy Education Source

ICD-10- PCS Resource Material

1. *Development of the ICD10 Procedure Coding System (ICD-10-PCS) – 3M HIS Research Report 1-09*
2. *ICD-10-PCS Reference Manual - Centers for Medicare and Medicaid Services*
3. *2011 ICD10 Procedure Code Tables and Index – Centers for Medicare and Medicaid Services*
4. *2010 Version – What’s New – Centers for Medicare and Medicaid Services*
5. *Development of the ICD10 Procedure Coding System - ICD10Codebooks.com*
6. *ICD 10 PCS Overview and Implementation Issues – <http://NCVHS.HHS.Gov/020409>*
7. *ICD10 Implementation – ICD10Codebooks.com*
8. *Barrettsinfo.com*

Images:

1. <http://www.summitmedicalgroup.com/library>
2. www.Wikipedia.org
3. <http://medical-dictionary.thefreedictionary.com>
4. <http://www.nlm.nih.gov/medlineplus/ency/imagepages> (ADAM images)
5. <http://emedicine.medscape.com>
6. <http://www.heart-valve-surgery.com/heart-valve-repair-valvuloplasty-annuloplasty.php>
7. http://drugster.info/img/ail/1082_1087_1.jpg, Vein Stripping
8. <http://intensivecare.hsnet.nsw.gov.au/central-venous-lines>
9. <http://www.kosmix.com>
10. http://www.jensenmd.com/procedures/face_neck/facelift_rhytidectomy.html
11. http://www.righthealth.com/topic/Ankle_Fusion

Day Submission Illustration

Professional Claims:

- If Date of Service Before 10/1/2014
 - *Use ICD-9 codes for professional and institutional charges*
- If Date of Service is On or After 10/1/2014
 - *Use ICD-10 diagnosis codes for professional outpatient and inpatient claims*

Facility Claims:

- If Discharged on 9/30/2014
 - *Use ICD-9 codes diagnosis codes*
 - *Use ICD-9 procedure codes*
- If Discharged On or After 10/1/2014
 - *Use ICD-10 diagnosis codes regardless of date of service*
 - *Use ICD-10 procedure codes regardless of date of service*

Inpatient Professional Service DOS After 10/1/2014

14. DATE OF CURRENT ILLNESS (First symptoms OR INJURY (Accident) OR PREGNANCY (LMP))		15. IF PATIENT HAS HAD SAME OR SIMILAR ILLNESS, GIVE FIRST DATE		16. DATES PATIENT UNABLE TO WORK IN CURRENT OCCUPATION	
17. NAME OF REFERRING PHYSICIAN OR OTHER SOURCE		17a.		18. HOSPITALIZATION DATES RELATIVE TO CURRENT SERVICES	
18. RESERVED FOR LOCAL USE		2014 - Adm - Dschg Dates		10 02 13	
21. DIAGNOSIS (SN NA) ILLNESS OR INJURY (Relate items 1, 2, 3 or 4 to Item 24E by Link)		22. MEDICARE REIMBURSEMENT CODE		23. PRIOR AUTHORIZATION NUMBER	
1. 101.0		22.		23.	
2. 150.9		22.		23.	
24. A. DATE(S) OF SERVICE		B. PLACE OF SERVICE		C. DRG	
24. D. PROCEDURES, SERVICES, OR SUPPLIES (Explain Unusual Circumstances)		E. DIAGNOSIS POINTER		F. CHARGES	
1. 10 02		1,2		4600.00	
2.		3.		4.	
3.		4.		5.	
4.		5.		6.	
5.		6.		7.	
6.		7.		8.	
25. FEDERAL TAX I.D. NUMBER		26. PATIENT'S ACCOUNT NO.		27. ACCEPT ASSIGNMENT?	
22 1234567				YES NO	
28. SIGNATURE OF PHYSICIAN OR SUPPLIER		29. SERVICE FACILITY LOCATION INFORMATION		30. BILLING PROVIDER INFO & PH. #	
Any Hospital 123 Any Street Birmingham, AL 36242		Cardiology Associates 100 Main Street Birmingham, AL 36242			
25. TOTAL CHARGE		26. AMOUNT PAID		27. BALANCE DUE	
4500.00				4500.00	

2014 - Adm - Dschg Dates →

Use ICD10 ←

← Oct 1, 2014 - Date of Service

PHYSICIAN OR SUPPLIER INFORMATION

ICD-10 Overview

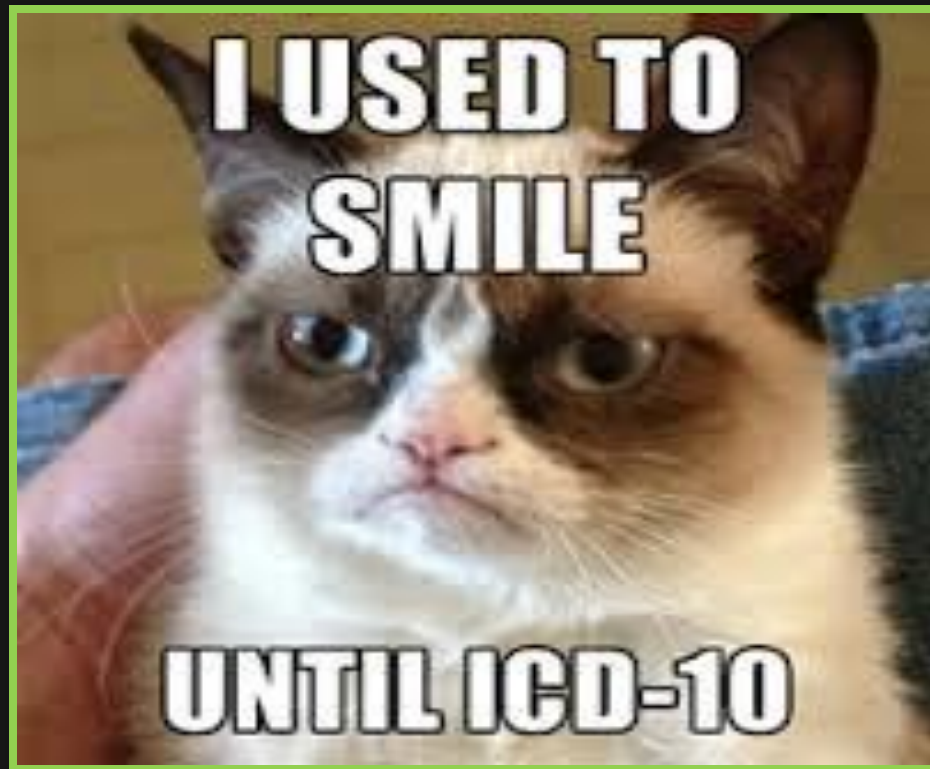
Laura Wilson, BSHCS, CCS-P

Special Investigation Claims Auditor



EL PASO FIRST
Health Plans inc.

ICD-10-CM Overview



EL PASO FIRST
Health Plans *inc.*

Transition Period

- **October 1, 2011** -last annual update of both ICD9 & ICD10
- **October 1, 2012** -limited code updates to both for the capture of new technology and new diseases
- **October 1, 2013** -still limited updates
 - NO updates to ICD-9
 - no longer HIPAA standard
- **October 1, 2014** -regular updates to ICD10 will begin



Introduction to ICD-10-CM

- CLASSIFICATION TOOL -includes the level of detail needed for morbidity classification and diagnostic specificity
- SPECIFICITY -more uniform, consistent level of specificity
- EXPANDABLE -a code system that can be expanded to include new codes with the development of technology and discovery of diseases within the original code structure



Comparison

ICD-9-CM Diagnosis Codes

- Approximately 14, 000 codes
- 3-5 characters; all numeric except for 'V' and 'E' codes
- No place holders used in the codes
- No distinction in laterality
- No distinction in initial and subsequent encounters
- No room for expansion within the code set
- General codes – difficult to analyze
- Outdated code set – limited international reporting available

ICD-10-CM Diagnosis Codes

- Approximately 69,000 codes
- 3-7 characters; alphanumeric
- 'X' used as a placeholder
- Includes laterality when applicable
- Initial and subsequent encounter distinction included (sequela)
- Code set designed to accommodate expansion within structure –alpha numeric ranges & placeholders
- Specificity of codes improving accuracy and data analytics
- Supports international reporting and data exchange between US and other countries

EL PASO FIRST

Health Plans inc.



New Features in ICD-10

- Combination codes for conditions and common symptoms manifestations
- Combination codes for poisonings and external causes
- Added laterality
- Added extensions for episode of care
- Expanded codes
- External cause codes are no longer a supplementary classification



New Notations

- “Includes” appears immediately under certain categories to further define, or give examples of the content of the category



EXCLUDES

- Excludes 1 = NOT CODED HERE, it indicates that the code excluded should never be used at the same time as the code above the excludes 1 note:

(Don't use this code for this diagnosis)

C41 malignant neoplasm of bone and articular cartilage of other and unspecified sites

Excludes 1: malignant neoplasm of bones of limbs (C40)

malignant neoplasm of cartilage of:

(ear C49.0)

(eyelid C49.0)

(larynx (C32.3)



EXCLUDES

- Excludes 2 = NOT INCLUDED HERE, it indicates that the condition excluded is not part of the condition it is excluded from but a patient may have both conditions at the same time

(Acceptable to use both codes together)

F40.2 Specific (isolated) phobias

Excludes 2: dysmorphophobia (nondelusional) (F45.22)
(nosophobia F45.22)



Structural Differences

ICD-9 CM

- ICD-9-CM has 3 –5 digits (no place holder used)
- Chapters 1 –17: all characters are numeric
- Supplemental chapters: first digit is alpha (E or V), remainder are numeric



Category

Etiology, Anatomic Site
Manifestation



Structural Differences

ICD-10 CM

- ICD-10-CM has 3 –7 digits (alphanumeric)
- Digit 1 is alpha (A –Z)
- Digit 2 is numeric
- Digit 3 is alpha or numeric
- Digits 4 –7 are alpha or numeric (place holder X for 5th or 6th)



Definitions

- CATEGORY = Disease group
- ETIOLOGY = Cause or origin of a disease
- ANATOMICAL SITE = location in the human body
- SEVERITY = state or quality
- EXTENSION = visit encounter or sequela for injuries and external causes



Posterior Dislocation of Right Hip, Initial Injury

S73.014A

S73 – **Category** = Dislocation and sprain of joint and ligaments of hip

S73.0 – **Subcategory** = Subluxation and dislocation of hip

S73.01 – **Anatomic Site** = Posterior subluxation and dislocation of hip

S73.014 – **Laterality** = in 6th digit = Posterior subluxation of right hip

S73.014A – **Specificity of timing** = in 7th digit = initial encounter



Examples:

<u>Category</u>	<u>ICD-9</u>	<u>ICD-10</u>
HIV	V08	B20
Psoriasis	696.1	L40.9
Headache	784.0	R51
Ptosis of eyelid	374.30	H02.40
Chronic Cholecystitis	575.11	K81.1



Diabetes Mellitus

- Expanded to include the classification and manifestation
- No longer classified as controlled or uncontrolled
- The code should include
 - Type of diabetes
 - Body system affected
 - Complications affecting the body system
- There are five categories of diabetes

E08 – with underlying condition

E09 – Drug or chemical induced

E10 – Type I

E11 – Type II

E13 – Other Unspecified



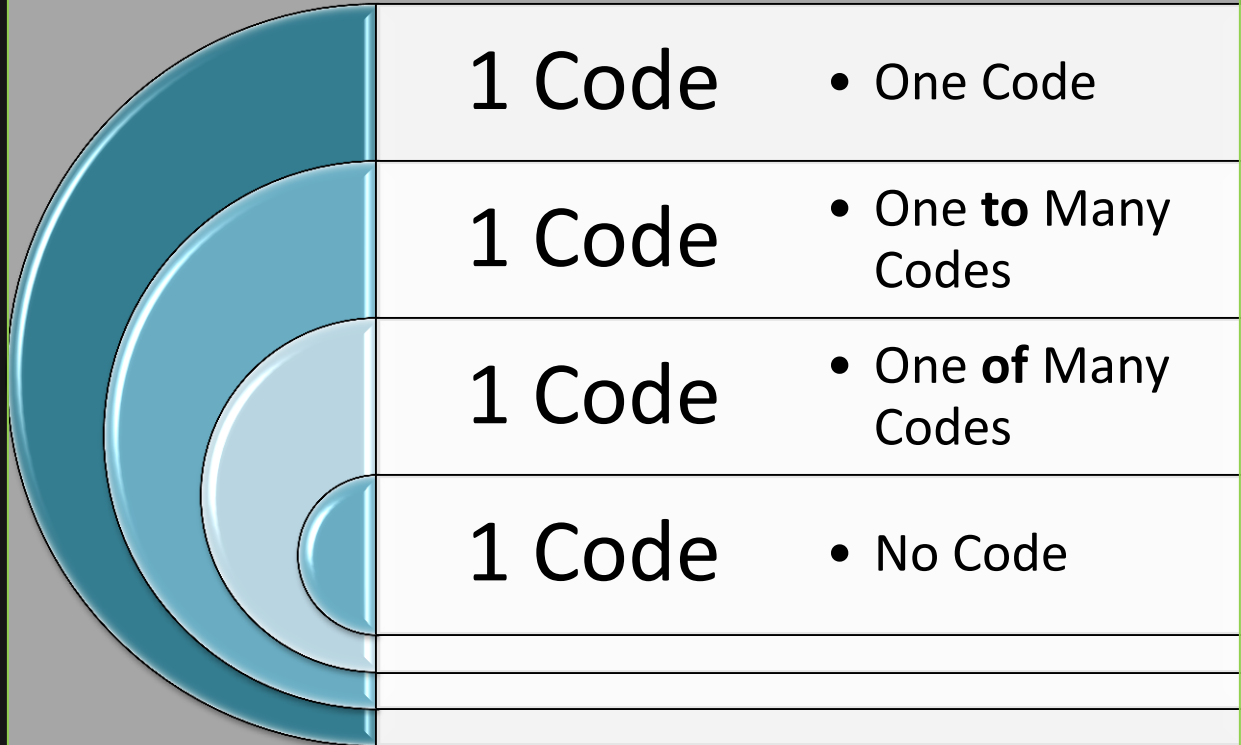
Fractures (S42.321A)

- Require a 7th digit that identifies if the fracture is open or closed for an initial encounter or if a subsequent encounter is for a routine healing, delayed healing, nonunion, or sequelae.
 - EXTENSIONS: A –initial encounter for closed fracture
 - B –initial encounter for open fracture
 - D – subsequent encounter for fracture with routine healing
 - G – subsequent encounter for fracture with delayed healing
 - K – subsequent encounter for fracture with nonunion
 - P – subsequent encounter for fracture with malunion
 - S - sequelae



ICD-9 to ICD-10

Challenges of ICD10 when mapping your current codes



One Code to One Code

Example:

ICD-9 = 001.9 Unspecified Cholera

ICD-10 = A00.9 Cholera Unspecified



EL PASO FIRST
Health Plans inc.

One Code to Many

Example:

ICD-9 = 354.0 Carpal tunnel syndrome

ICD-10 = G56.00 Carpal tunnel syndrome
unspecified upper limb

G56.01 Carpal tunnel syndrome
right upper limb

G56.02 Carpal tunnel syndrome
left upper limb



Combination Codes

Example:

ICD-9 = 250.71 Diabetes with peripheral circulatory disorders, type I or unspecified, not stated as uncontrolled

785.4 Gangrene

ICD-10 = E10.52 Type 1 diabetes with diabetic peripheral angiopathy with gangrene



Let's Review



EL PASO FIRST
Health Plans *inc.*

Questions?



EL PASO FIRST
Health Plans *inc.*

Anatomy & Physiology

Mabel Toscano, RN, BSN

Prior Auth Coordinator



EL PASO FIRST
Health Plans *inc.*

ICD-10 for Health Care Providers Overview Anatomy and Physiology



EL PASO FIRST
Health Plans inc.

Presentation Goals:

1. Provide an Overview of Anatomy and Physiology Concepts that are Relevant and Strategic to ICD-10-CM Coding.
2. Explore the Opportunities for Fully Utilizing the Greater Specificity of Information Reported By the New Diagnosis Code Set From a Payer Perspective.
3. Organize the study of the anatomy and physiology concepts according to the structure of the ICD-10-CM Code Set.



Facts About Anatomy, Physiology & ICD-10-CM

- Anatomy is the study of the structure of the body and the relationships between body structures.
- Physiology is the study of the functions of the human body structures and how they perform together.
- ICD-10 diagnosis codes were expanded to include a greater level of specificity and laterality.



ICD-10-CM FACTS

- The ICD-10 Diagnosis Code Set includes robust definitions of severity, co-morbidities, complications, sequelae (late effects), manifestations, cause and other details that define the patient's condition.
- The anatomy and physiology concepts in this overview are organized relative to the orders of the ICD-10 Tabular Index Chapters.



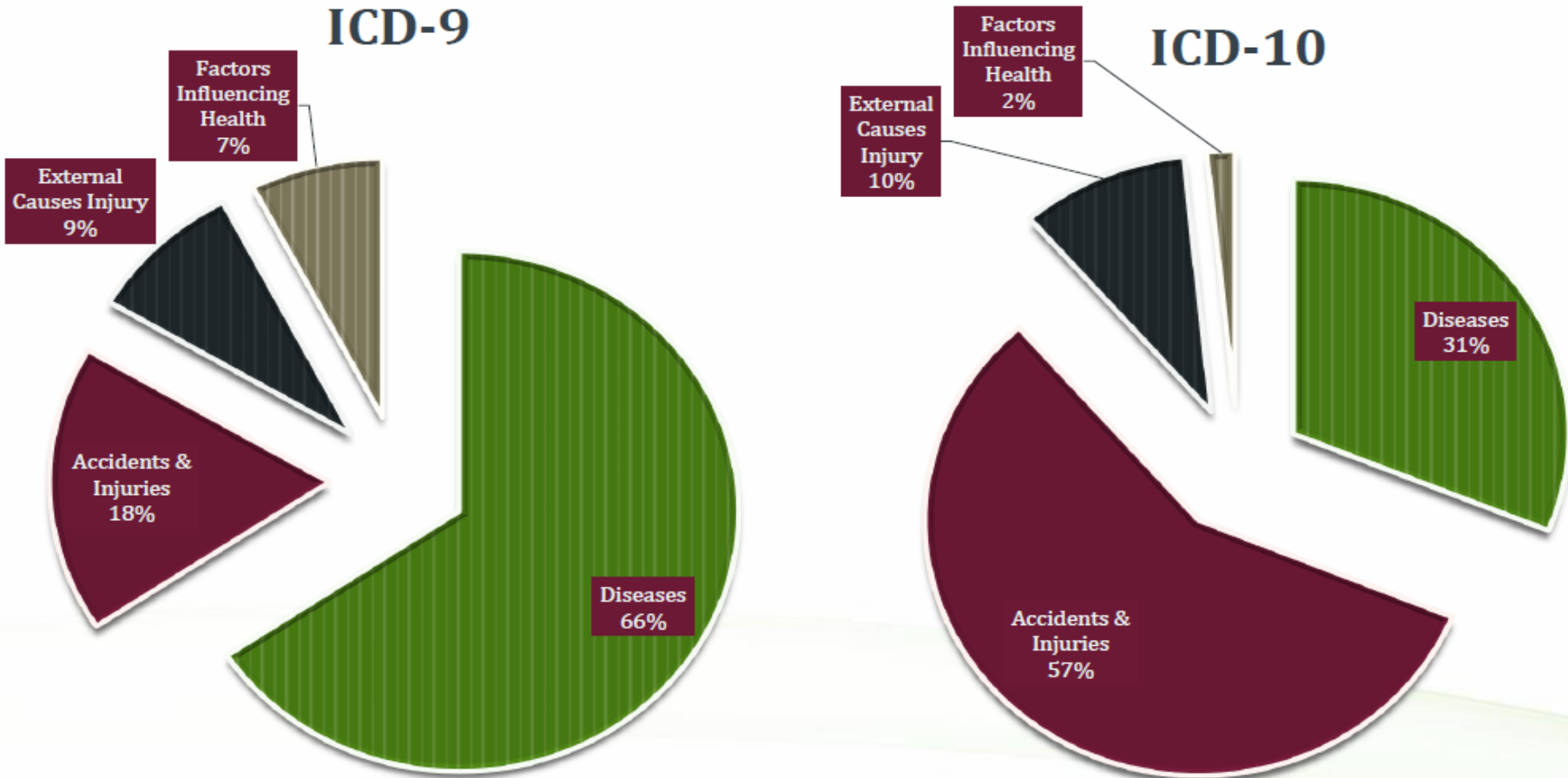
ICD-10-Additional Parameters of Severity and Risk

- Etiology or Causation
- Complications
- Detailed Anatomical Location
- Co-morbidities
- Manifestations
- Sequelae
- Timing of Encounters
- Functional Impairments
- Biological and Chemical Agents
- Phase/ Stage
- Lymph Node Involvement
- Lateralization or Localization
- Procedure or Implant Related

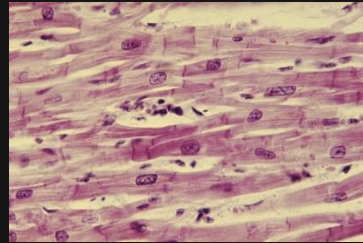
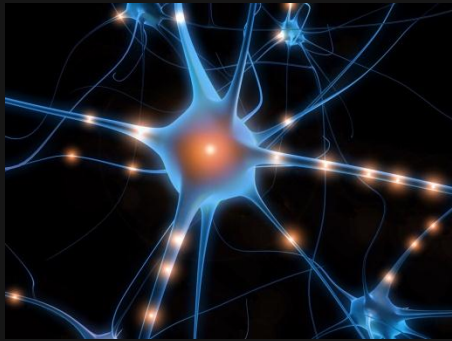


Compare ICD-9 to ICD-10 Diagnosis Codes

Compare ICD-9 to ICD-10 Diagnosis Codes



Body Systems and the Organization of ICD-10-CM



Cells

Tissues

Organs

Body
Systems



Body Systems and the Organization of ICD-10-CM

Cells are the basic element of a living organism. The human body is made up of trillions of cells. Cells are joined together to form tissue. Different types of tissue perform different functions. The four principle types of tissues include: epithelial, connective, muscular, and nervous. Tissues make up organs that perform functions such as support, protection, filtration, absorption, secretion, and movement. Body systems are two or more organs that function together to perform specific functions.



Blood Forming Organs and the Immune System

Infectious & Parasitic Diseases A00-B89

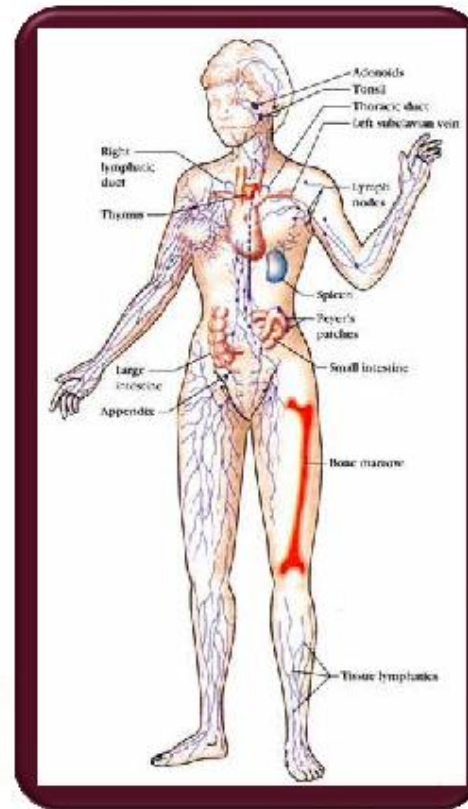
Neoplasm C00- D49

*Blood and Blood Forming Organs
& Diseases of Immune System D50-D89*

The primary function of the immune system is to defend the body against diseases.

The body is equipped with two lines of defense:

- 1- To prevent pathogens from entering the body – skin and mucous membranes*
- 2- To produce antibodies to destroy or neutralize pathogens that penetrate and enter the body*



SIRS, Systemic Inflammatory Response Syndrome (A40-A41)

ICD-9 Classified as Septicemia with Cause (038)

Use to identify 'With Sepsis or SIRS' Additional Code:

- *995.90 Systemic inflammatory response syndrome, unspecified 99591 Sepsis*
- *995.92 Severe sepsis*
- *995.93 Systemic inflammatory response syndrome due to noninfectious process without acute organ dysfunction*
- *995.94 Systemic inflammatory response syndrome due to noninfectious process with acute organ dysfunction*

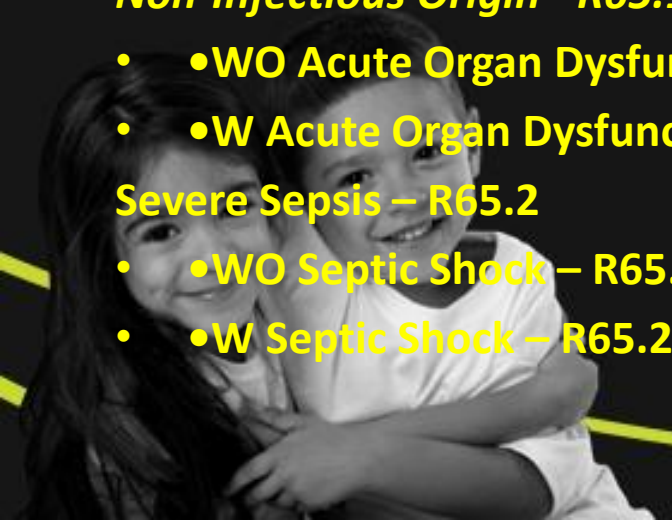
ICD-10 Defined as 'Sepsis' by Type of Infection (A40-A41) Septicemia only identified as NOS (Not Elsewhere Specified – A41.9) SIRS –

Non-Infectious Origin - R65.1

- **•WO Acute Organ Dysfunction– R65.10**
- **•W Acute Organ Dysfunction– R65.11 SIRS – Infectious Origin**

Severe Sepsis – R65.2

- **•WO Septic Shock – R65.20**
- **•W Septic Shock – R65.21**



Staphylococcus Aureus Infection

**Specificity Added to 2012 ICD-10 Code Set*

MSSA – Methicillin Susceptible

- •A41.01 Sepsis due to Methicillin Susceptible Staphylococcus Aureus
- •A49.01 Methicillin Susceptible Staphylococcus Aureus Infection, Site Unspecified
- •B95.61 Methicillin Susceptible Staphylococcus Aureus Infection as the Cause of Diseases Classified Elsewhere

MRSA – Methicillin Resistant

- A41.02 Sepsis due to Methicillin Resistant Staphylococcus Aureus
- A49.02 Methicillin Resistant Staphylococcus Aureus Infection, Site Unspecified
- B95.62 Methicillin Resistant Staphylococcus Aureus Infection as the Cause of Diseases Classified Elsewhere

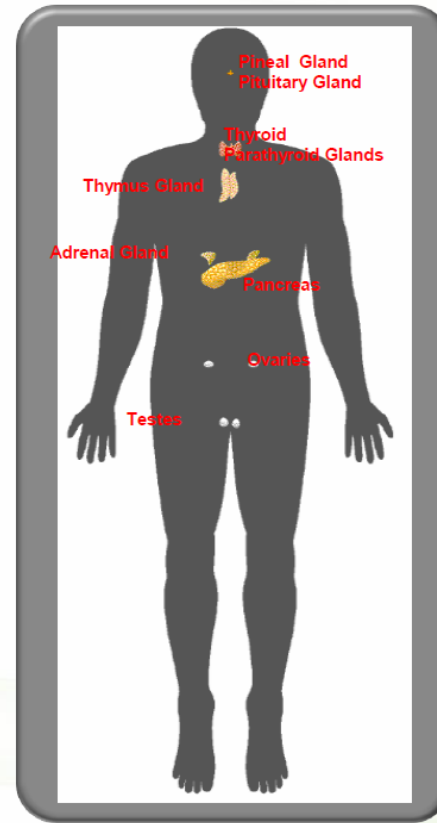


The Endocrine System E00-E89

The endocrine system works with the central nervous system to regulate body functions.

The primary function of the endocrine system is to maintain homeostasis or internal adjustments to balance the body's physiology.

The endocrine system consists of glands that are scattered throughout the body to secrete hormones.



Hormones and Endocrine Glands

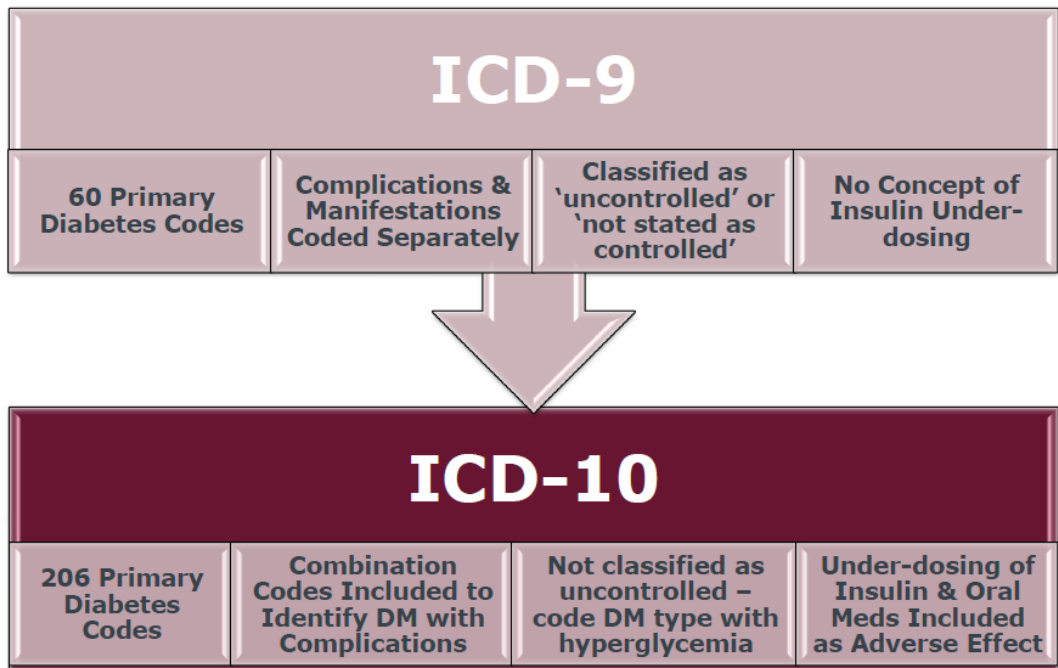
Endocrine Glands secrete hormones that change the physiological activities of cells. Eight major endocrine glands include:

- 1.Pituitary*
- 2.Thyroid*
- 3.Parathyroids*
- 4.Adrenals*
- 5.Pancreas*
- 6.Ovaries/Testes*
- 7.Pineal*
- 8.Thymus*



Diabetes (E08-E13)

The ICD-10 Diabetes Mellitus codes are combination codes that include the type of diabetes mellitus, the body system affected and the complications affecting the body system.



The Nervous System

Mental Behavioral F01-F99

Nervous System G01-G99

Eyes H00-H59

Ears H60-H95

The nervous system is the control center of the body.

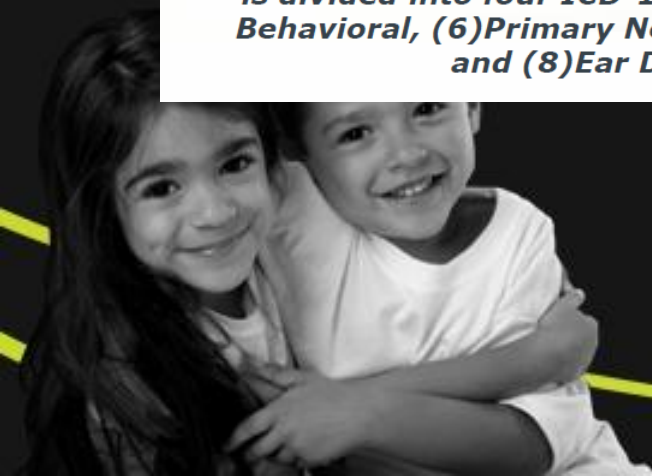
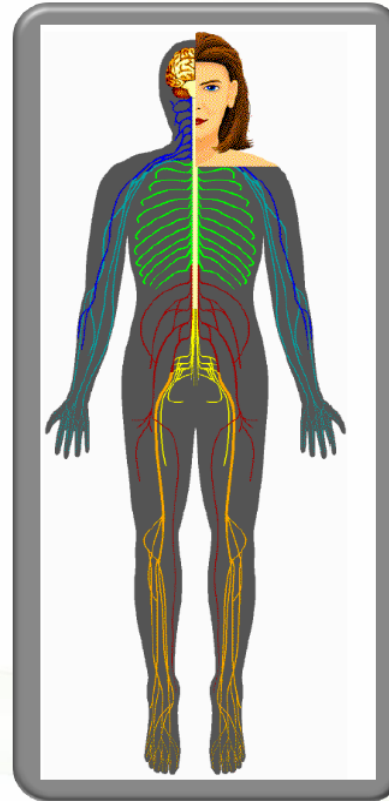
The brain and the spinal cord make up the central nervous system.

Massive nerve fibers branch throughout the body to make up the peripheral nervous system.

The body's sense organs (eyes, ears, tongue, nose and skin) send strategic signals through the nerve fibers to the brain.

The organs of the nervous system works together to analyze, interpret and respond to changes within and around the body.

Classification of diseases of the Nervous System is divided into four ICD-10 chapters: (5)Mental Behavioral, (6)Primary Nervous System, (7)Eye and (8)Ear Disorders.



Epilepsy: A seizure disorder caused by a surge of electrical signals in all or a part of the brain

ICD-9 - 345

18 ICD-9 Codes Classifications not uniquely identified in ICD-10:

- **Petit Mal 345.2**
- **Grand Mal 345.3**

Classification categories include generalized, other and unspecified

Intractable – 5th digit used to classify

ICD-10 – G40

47 ICD-10 Codes

Intractable epilepsy is epilepsy not well controlled. In ICD-10, also equivalent to:

- Pharmacoresistant (Pharmacologically resistant)**

- Treatment Resistant**

- Refractory (medically)**

- Poorly Controlled**

Status Epilepticus refers to recurrent or continuous seizure activity lasting more than 30 minutes.

6th Character used to classify both

Intractable/Non-Intractable & With or Without Status Epilepticus

Specific Epilepsy Syndromes added to I10 such as Lennox-Gastaut Syndrome G40.812-G40.819



Mental & Behavioral Disorders Due to Psychoactive Substance Abuse F10-F19

ICD-9

Three major categories reported:

- 1. Alcohol Dependence 303*
- 2. Drug Dependence 304*
- 3. Non-Dependent Abuse of Drugs 305*

Physical complications reported under disease or manifestations

Classifications:

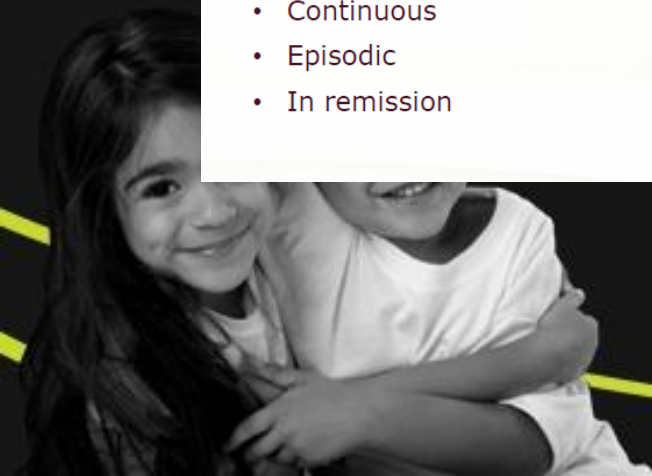
- Unspecified
- Continuous
- Episodic
- In remission

ICD-10

Category in Mental Behavioral Section - Disorders Due to Psychoactive Substance Abuse and Dependence

Additional Sub-Classifications:

- Abuse, Dependence or Use
- Uncomplicated
- With Intoxication
- With Induced Psychotic Disorder
- With Delirium
- With Perceptual Disturbance
- With Hallucinations
- With Mood Disorders
- With Sexual Dysfunction
- With Sleep Disorders



The Circulatory System

I00-I99

The primary function of the circulatory system is to transport blood and lymph throughout the body.

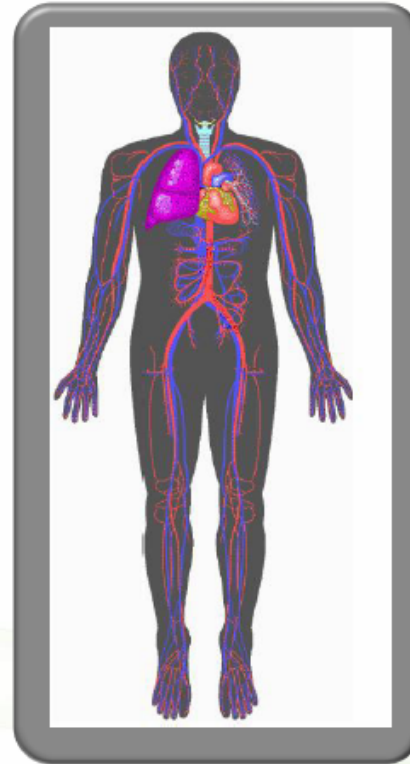
The circulatory system is comprised of a cardiovascular and a lymphatic system.

The cardiovascular circulatory system is made up of the blood, the heart and blood vessels.

The lymphatic circulatory system is made up of lymph, lymph vessels, lymph nodes and lymphatic organs – tonsils, thymus and the spleen.

*The two systems work in tandem to:
deliver oxygen, nutrients and hormones
to body tissues,*

*Destroy and filter pathogens and waste
And remove excess fluid, dead cells,
pathogens, toxins and waste.*



The Respiratory System

J00-J99

The respiratory system brings oxygen to the body from the atmosphere and removes carbon dioxide waste from the blood stream. As the body inhales, oxygen is taken into the lungs. As the body exhales carbon dioxide is expelled. The ventilation action or breathing is driven by the diaphragm and intercostal muscles.

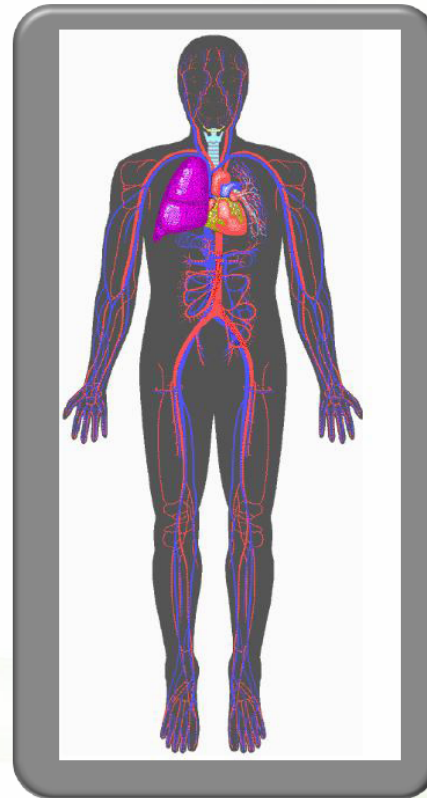
The organs of the respiratory system also work with the immune system to fight against airborne bacteria, pathogens or other particles. Fine hairs, protective mucus and other defense mechanisms work together to prevent penetration of foreign agents into the body.

The lungs function as the hub of the respiratory system where the gas exchange takes place.

The

The nasal cavities, paranasal sinuses, pharynx and the larynx make up the upper respiratory system.

The trachea, bronchi and lungs make up the lower respiratory system.



Asthma (J45) and ICD-10 Classification

In ICD-10, asthma is classified by the severity, or intensity of the disease process.

Acute exacerbation (current) and with status asthmaticus (acute attack, not responding to standard treatment) are coded in both code sets.

ICD-9

Classified as:

- **Extrinsic (external cause)**
- **Intrinsic (internal cause – stress, anxiety, viruses, etc)**
- **Chronic Obstructive**
- **Unspecified**

ICD-10

Classified as:

- **Mild Intermittent**
- **Mild Persistent**
- **Moderate Persistent**
- **Severe Persistent**
- **Unspecified**

I-10 Translation of I-9:

- ***Extrinsic – Coded as Allergic***
- ***Intrinsic – Coded as Non-allergic***



The Digestive System

K00-K94

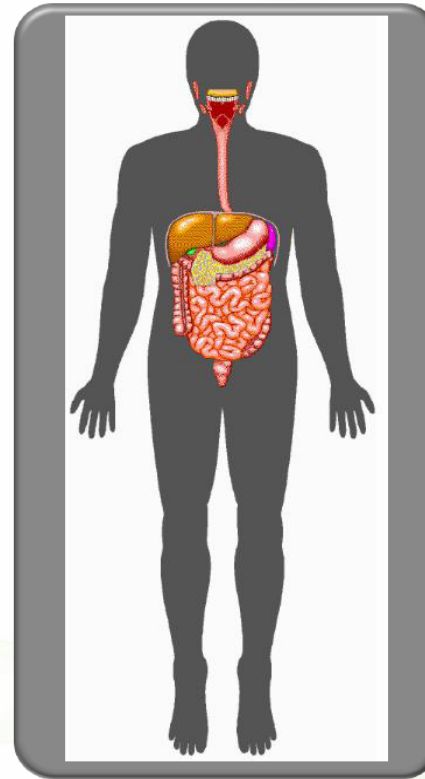
The gastrointestinal tract is the passage for food to be taken into the body, digested or prepared for cellular intake and eliminated as waste.

The digestive system functions to ingest food, transport food, secrete various digestive substances, digest food into absorbable nutrients, supply the body with water and eliminate waste products.

Digestion can be traced from the mouth to the esophagus . Two tiny organs: the epiglottis and the uvula act as gate keepers and directors for the common pathways for air and food in the throat.

As digestion continues, food moves into the stomach to be further broken down with gastric acids and moved to the small intestine.

In the small intestine organs that aid digestion: the liver, gallbladder and pancreas, deliver chemical secretions to further absorb nutrients. Once the digestive process is complete, the waste is moved to the large intestine to be eliminated from the body through the rectum and the anus.



The Integumentary System

L00-L99

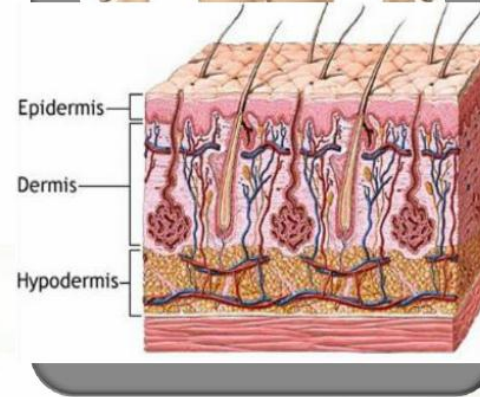
The skin (the integument) and subcutaneous tissues including the dermal appendages – hair, nails, sweat and oil glands make up the integumentary system.

The skin is the biggest organ of the body. It accounts for 12-15% of the body's weight.

The skin not only serves as connective tissue to house the body systems but is the primary protector against pathogenic microorganisms, chemicals, heat and ultraviolet radiation.

The human skin is made up of three parts: the epidermis, the dermis and the hypodermis. The skin is classified as an organ because each layer of the skin is composed of different tissues with different functions.

Touch and pressure receptors located in the skin react to outside stimulation to regulate body temperature, synthesize vitamin D and excrete metabolic waste.



Pressure Ulcers (L89)

In ICD-10, the specific criteria for the stages are defined in the tabular list. The classification includes bed sore, decubitus ulcer, plaster ulcer, pressure area and pressure sore.

ICD-9 (707)

15 Codes

Classified as:

- **Codes Assigned By Site**
(7 General Sites Listed)

OR

- **Stages 1-4**
- **Unspecified**
- **Unstageable**

ICD-10 (L89)

150 Codes

Classified as:

- **Specific Sites**
- **Laterality**

AND

- **Stages 1-4**
- **Unspecified**
- **Unstageable**

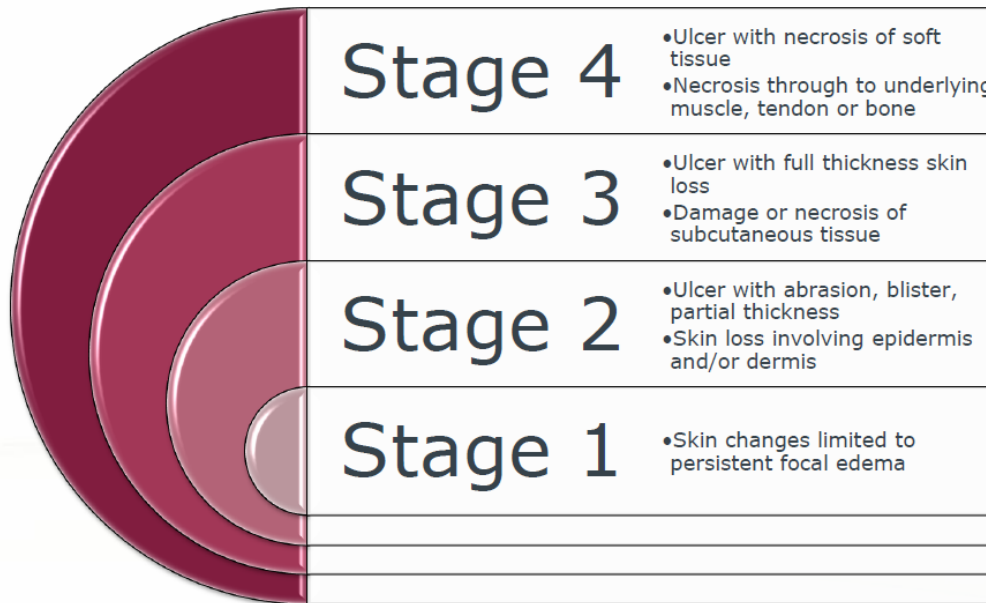
For each site



Pressure Ulcers Stages as Defined in ICD-10

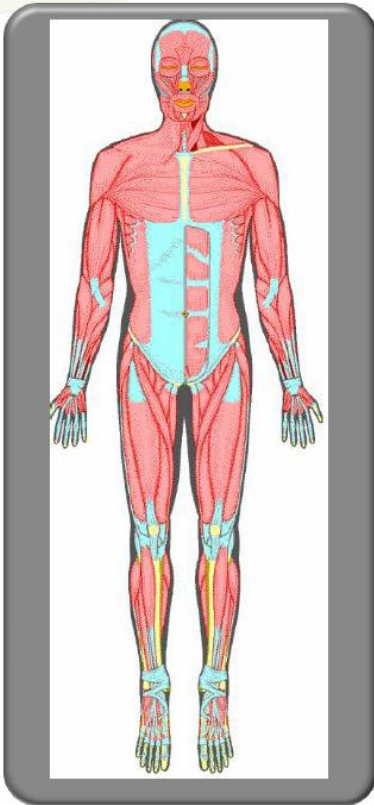
Greater specificity of severity, site or location and laterality. Strategic pressure sites include: elbows, back, sacral region, hips, buttock, ankles and heels.

Severity classified by stages 1-4, unspecified and unstageable.



The Musculoskeletal System

M00-M99

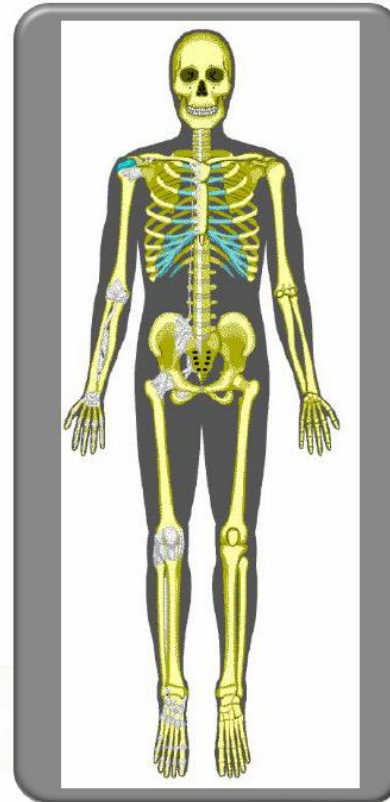


The musculoskeletal system is two distinct systems that work together to support the body and protect internal organs.

The bones and joints give the body its shape and support while the muscles contract to enable the body to move.

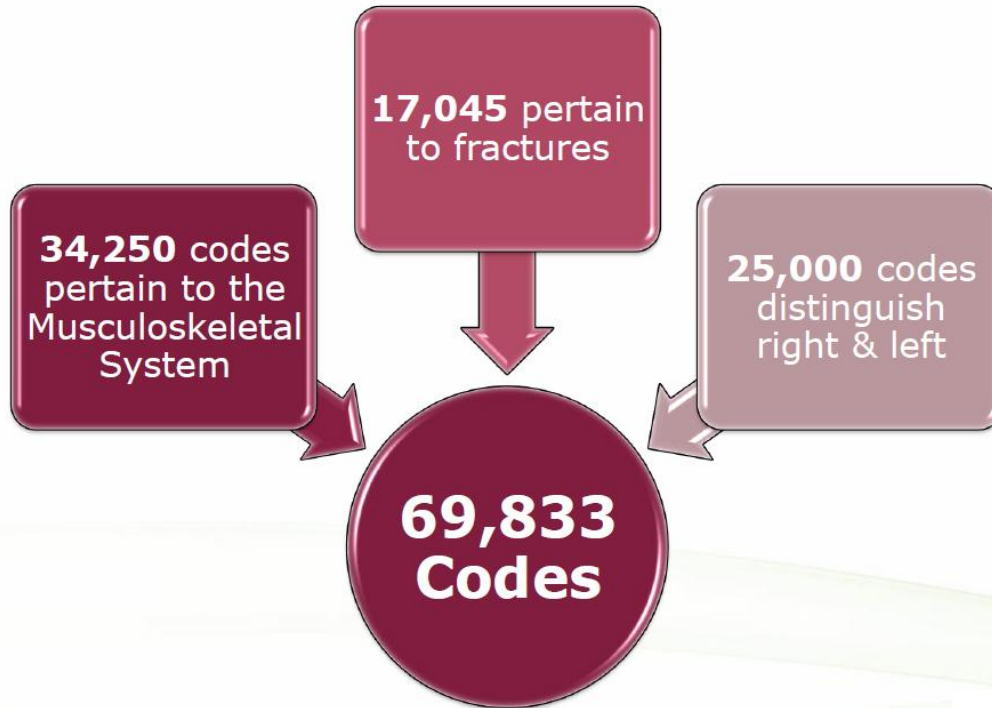
Other important functions of the skeletal system include blood cell production and storage of minerals such as calcium and phosphorous.

The human body is made up of 206 bones and 700 muscles.



EL PASO FIRST
Health Plans inc.

ICD-10 Codes that Pertain to Musculoskeletal System



Arthritis (M00 – M08)

Site specificity and laterality added to the ICD-10 diagnosis code set.

ICD-9 (711 - 716)

Classified as:

- **With Infections & Pyogenic Rheumatoid (714)**
- **Allergic**
- **Climacteric (Menopausal)**
- **Unspecified**

Site Identify (5th Digit)

ICD-10 (M00 – M08)

Classified as:

- **Pyogenic Arthritis (Bacteria – 4th Digit)**
 - Staphylococcal
 - Pneumococcal
 - Streptococcal
 - Other Bacteria

- **Rheumatoid Arthritis (M05-M06)**
- **Juvenile (M08)**

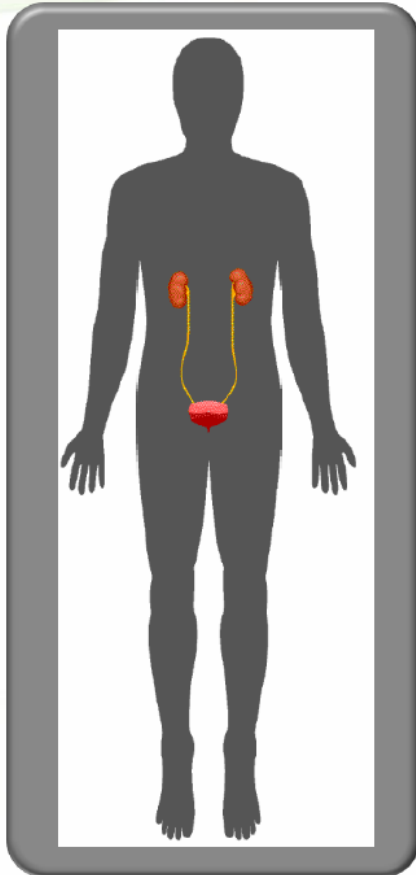
(GEMS - 96 I10 codes mapped to 219 codes in Juvenile category)

**More Specific Site Identity (5th Digit)
Laterality (6th Digit)**



The Genitourinary System

N00-N99



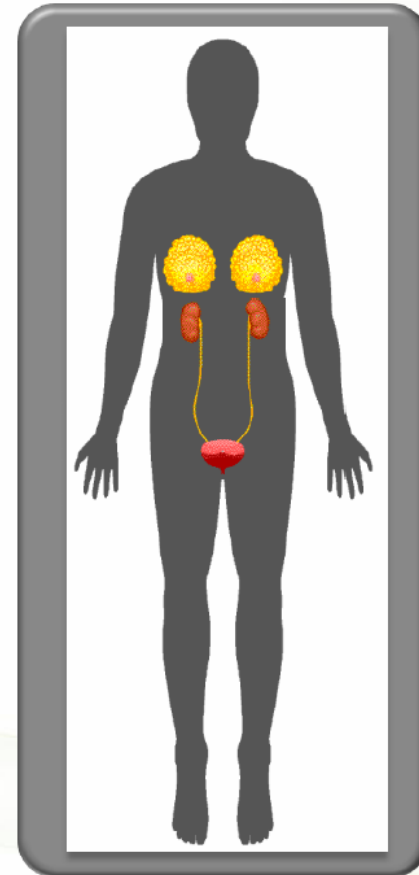
The genitourinary system contains the reproductive organs and the urinary system organs.

Both systems are located in the same anatomic region and share common pathways.

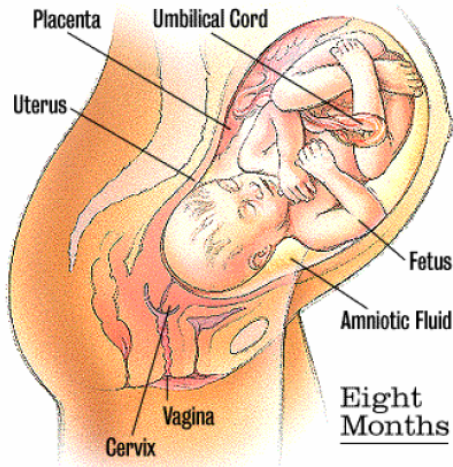
The organs of the urinary system include: two kidneys, two ureters, a urinary bladder, two sphincter muscles and the urethra. The primary function of the urinary system is to remove waste products from the blood.

The male and female genital systems include external and internal organs which enable sexual reproduction.

The female breasts which produce milk, are included in the genitourinary system.



Pregnancy (000-099) and ICD-10 Classification



Code by Trimester

1st Trimester = Less than 14 Weeks

2nd Trimester = 14 Weeks to Less Than 28 Weeks

3rd Trimester = 28 Weeks to Delivery

Maternal and Obstetric Causes

Pregnancy, Childbirth or Puerperium

Use only on Maternity (not newborns)

Z34 – Supervision of Normal Pregnancy

****Also by Trimester***



EL PASO FIRST
Health Plans inc.

Termination of Pregnancy (Abortion) ICD-9 153 ICD-9 Codes

Legal Abortion 635...

635 Legally induced abortion

Requires fifth digit to identify stage:

- 0 unspecified
- 1 incomplete
- 2 complete

Includes:

abortion or termination of pregnancy:

- elective
- legal
- therapeutic

Excludes:

menstrual extraction or regulation (V25.3)

Illegal Abortion 636...

636 Illegally induced abortion

Requires fifth digit to identify stage:

- 0 unspecified
- 1 incomplete
- 2 complete

Includes:

abortion:

- criminal
- illegal
- self-induced

Other Termination of Pregnancy Codes Include:

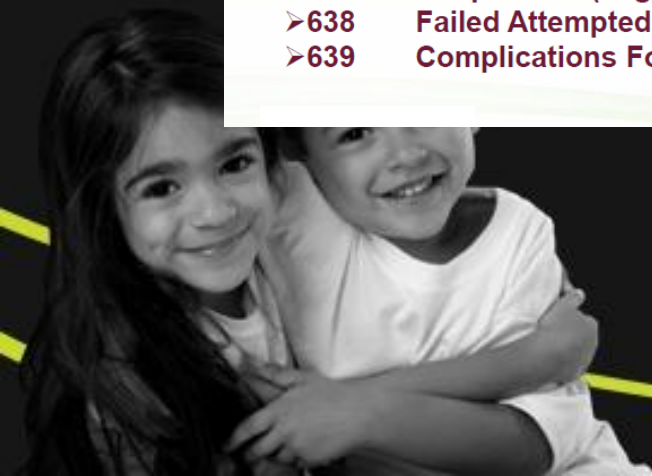
630-631 *Abnormal Products of Conception*

632 *Missed Abortion*

633 *Ectopic Pregnancy*

634 *Spontaneous Abortion*

- **637 Unspecified (Legal or Illegal)**
- **638 Failed Attempted Abortion**
- **639 Complications Following Abortion**



ICD-10 Termination of Pregnancy

ICD-10 (O00-O08) Pregnancy with Abortive Outcome

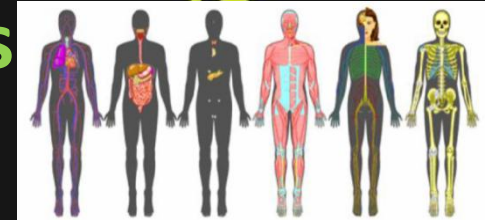
81 ICD-10 Codes

***NO Classification of Legal and Illegal Abortion in ICD-10
Encounter for Elective Termination of Pregnancy – Z33.2***

- ***O00 – Ectopic Pregnancy***
- ***O01 – Hydatiform Mole***
- ***O02 – Other Abnormal Products of Conception***
- ***O03 – Spontaneous Abortion***
- ***O04 – Complications Following Termination of Pregnancy***
- ***O07 – Failed Attempted Termination of Pregnancy***
- ***O08 – Complication Following Ectopic & Molar Pregnancy***



ICD-10 Code Classifications Impacting All Body Systems



Classifications Impacting All Body Systems:

Conditions Originating in Perinatal Period	P00-P96
Congenital Abnormalities	Q00-Q99
Symptoms, Signs, Abnormal Findings	R00-R99
Injuries and Other Consequences of External Causes	S00-T88
External Causes of Morbidity	V00-Y99
Factors Influencing Health Status	Z00-Z99





Poisoning & Adverse Effects

Medicinal Substances (960-979) T36-T50

Non-Medicinal (980-989) T51-T65

ICD-9 (960-989)

Classified by:

Kind of Substance

*Such as Antibiotics,
Sedatives, etc.*

Grouping of Drugs

*Such as Penicillin,
Tetracycline, etc.*

ICD-10 (T36-T65)

Kind of Substance (3rd Digit)

Grouping of Drugs (4th Digit)

5th Digit Not Used (X Place Holder)

Classification of Intent (6th Digit)

- Accidental
- Incidental Self-harm
- Assault
- Undetermined
- Adverse Effect
- Under dosing

EL PASO FIRST

Health Plans inc.



New Codes Added, Adverse Reactions (Y70-Y90)

Devices Specifically Categorized as Associated with Adverse Effects:

- Anesthesiology Devices
- Cardiology Devices
- Otorhinolaryngological Devices
- Gastroenterology and Urology Devices
- General Hospital and Personal Use Devices
- Neurological Devices
- Obstetric and Gynecological Devices
- Ophthalmic Devices
- Radiologic Devices
- Orthopedic devices
- Physical Medicine Devices
- General and Plastic Surgery Devices
- Other and Unspecified Devices



New in ICD-10

- Medical Devices Associated with Adverse Incidents (Y70-Y82)
- Evidence of Alcohol Involvement Determined by Blood Alcohol Level (Y90)

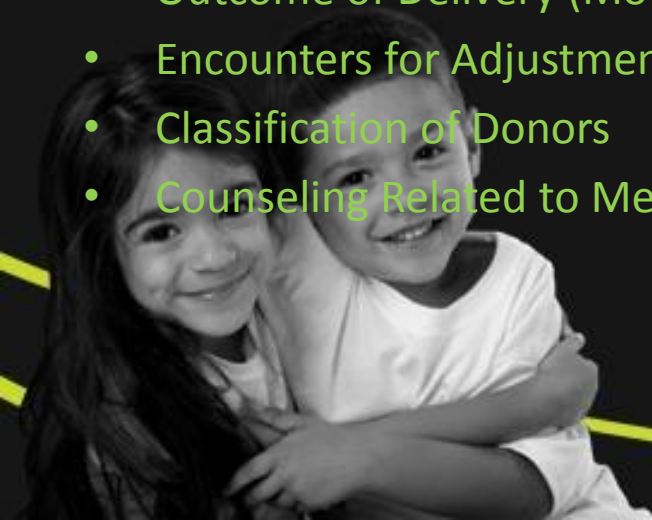


EL PASO FIRST
Health Plans inc.

Factors Influencing Health Status (Z00-Z99)

Other reasons for encounters or medical intervention including:

- Examinations
- Rule Out Suspected Diseases or Conditions
- Resistance to Drugs
- Suspected Exposure to Communicable Diseases
- Carriers of Infectious Diseases
- Encounters for Reproduction
- Supervision of Normal Pregnancy by Trimester with Identification of the First and Subsequent Pregnancy
- Outcome of Delivery (Mother's Record and Baby's Record)
- Encounters for Adjustments or Removal of Prosthetics or Devices
- Classification of Donors
- Counseling Related to Mental Health Services



New in ICD-10

- Weeks of Gestation (Z3A)
- Blood Types (Z67)



EL PASO FIRST
Health Plans *inc.*

Let's Review



EL PASO FIRST
Health Plans *inc.*

Questions?



EL PASO FIRST
Health Plans *inc.*

1.

ICD-10_PCS Code Structure Overview



Inpatient Facility Services Discharge after 10/1/2014

Inpatient Facility Claim Discharge After 10/1/2014 = ICD-10 Codes

ICD-9-CM	DESCRIPTION	UNIT	UNIT PRICE	DISCOUNT	NET AMOUNT	DATE	STATUS	REMARKS	
0129	SemiPrivate		200.00		1600.00		4		
0250	Pharmacy				30.00		L		
0360	OR Services				1200.00	09/28/2013			
		3a PAT. CNTL #	1234						
		b. MED. REC. #	98765						
		5 FE D. TAX NO.	6 STATEMENT COVERS PERIOD FROM THROUGH		7		RESERVED		
				TOTALS		2850.00	0.00		
PAYER NAME		SINGLE PLAN ID		PAYER IDENTIFICATION NUMBER		PAYER TYPE		PAYER GROUP NO	
Primary Payer		Report HIPAA National Health Plan Identifier		491234		2222222222		L234567890	
Secondary Payer						AMOUNT ESTIMATED		Secondary	
								Tertiary	

DOS – does not matter

Discharge Date > 10/1/2014

68	ADMIT DX	1509	70	PATIENT REASON DX	May be used to report reason for visit	71	PPS CODE	DRG
74	PRINCIPAL PROCEDURE CODE	027R04T	a.	OTHER PROCEDURE CODE		b.	OTHER PROCEDURE CODE	
c.	OTHER PROCEDURE CODE							

Use ICD-10 Diagnosis & Procedure Codes

Use A through Q to report "Other Diagnosis" if applicable

Inpatient Facility Services Discharge before 10/1/2014

Inpatient Facility Services Discharge Before 10/1/2014 = ICD-9 Coding

ICD-9-CM	DESCRIPTION	UNIT	CHARGE	DISCOUNT	NET CHARGE	ADJUSTED CHARGE	REMARKS
0129	Semi-Private		200.00		2	400.00	Future Use
0250	Priority				L	50.00	
0360	OR Services			09/28/2013		1200.00	
3a PAT. CNTL. #		1234					
b. MED. REC. #		98765					
5 FED. TAX NO.		6 STATEMENT FROM		COVERS PERIOD THROUGH		09/30/2013	
PAGE 1 OF 1		CREATION DATE		TOTALS		1650.00	
REPORT TYPE		PATIENT ID		INSURANCE		2222222222	
Primary Payer		Report HIPAA National Health Plan Identifier		Required when patient has other payer/insured		Amount estimated to be due	
Secondary Payer						L234567890	
Tertiary Payer						Secondary	
						Tertiary	

Discharge Date < 10/1/2014

66 DX	Use A through Q to report "Other Diagnosis" if applicable								
9	Use ICD-9 Diagnosis & Procedure Codes								
69 ADM. DX	4280	ADPATIENT REASON DX			May be used to report reason for visit	71 PPS CODE E	DRG	72 EC I	May
74	PRINCIPAL PROCEDURE CODE	PROCEDURE DATE	a.	OTHER PROCEDURE CODE	PROCEDURE DATE	b.	OTHER PROCEDURE CODE	PROCEDURE DATE	75
	3749	09/29/2013							Reserved
	c.	OTHER PROCEDURE CODE	PROCEDURE DATE	d.	OTHER PROCEDURE CODE	PROCEDURE DATE	e.	OTHER PROCEDURE CODE	PROCEDURE DATE

Procedure Comparison Chart

ICD-9 to ICD-10 Procedure Code Comparison

<u>ICD-9-CM Procedure Codes – Vol 3</u>	<u>ICD-10-PCS Codes</u>
3,859 Codes	71,920 Codes
3-4 Numeric Characters With Decimal after 2 Characters	All Codes contain Z Characters; all Alpha Numeric – No decimal
No placeholders used in the codes	' Z ' used as a Placeholder for Unused Qualifiers
Surgical Names and Eponyms Used	<u>Standard Terminology</u> for Procedures, Surgical Approaches
Limited Space in Code Set for New Codes	Code set designed to accommodate <u>expansion within structure</u> –alpha numeric ranges & placeholders
Body Parts and Surgical Approaches not Part of Code Structure	Specificity of codes including <u>Body Parts, Surgical Approaches and Qualifiers</u>
Codes Limit DRG Grouping & Pricing	<u>New Technology and Devices</u> Allows More Specific DRG Processing

PROCEDURE CODE STRUCTURE

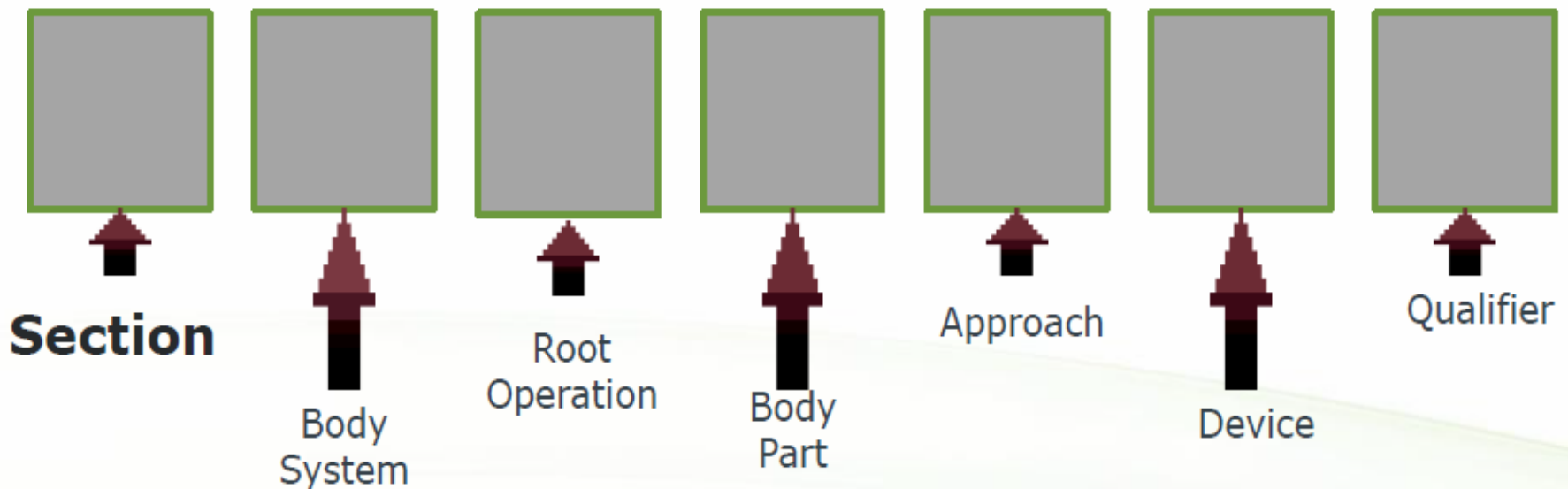
The **Section** is always in the first position of the procedure code.

The meaning of the subsequent six characters may be unique for each section.

There are 34 valid values that may be used for any of the characters.

The character's meaning will be consistent for the position in the code. Not all 34 values are used for each character in every section.

The procedure codes are always 7 characters. If there are no valid values for a character, the letter 'Z' is used as a place holder.



Root Operations

- The ICD-9 procedure are identified based on common surgical terms.
- The ICD-10-PCS terms are designed to identify the objective of the procedure.



Root Operations

EXAMPLE: 'Anastomosis' is an ICD-9.

The term means to join one hollow or tubular organ to another.

In ICD-10-PCS the applicable term would be 'bypass' or 'resection'.



ICD-9 Coding Example

ICD-9 Coding Example Excision Lesion Achilles Tendon

ICD-9 Code = 83.31

83 Operations on muscle, tendon, fascia, and bursa, except hand

83.3 Excision of lesion of muscle, tendon, fascia, and bursa

Excludes:

biopsy of soft tissue (83.21)

➔ **83.31 Excision of lesion of tendon sheath**

Excision of ganglion of tendon sheath, except of hand

83.32 Excision of lesion of muscle

Excision of:

heterotopic bone

muscle scar for release of Volkmann's contracture

myositis ossificans

83.39 Excision of lesion of other soft tissue

Excision of Baker's cyst

Excludes:

bursectomy (83.5)

excision of lesion of skin and subcutaneous tissue (86.3)

synovectomy (80.70-80.79)

Structural Distinction

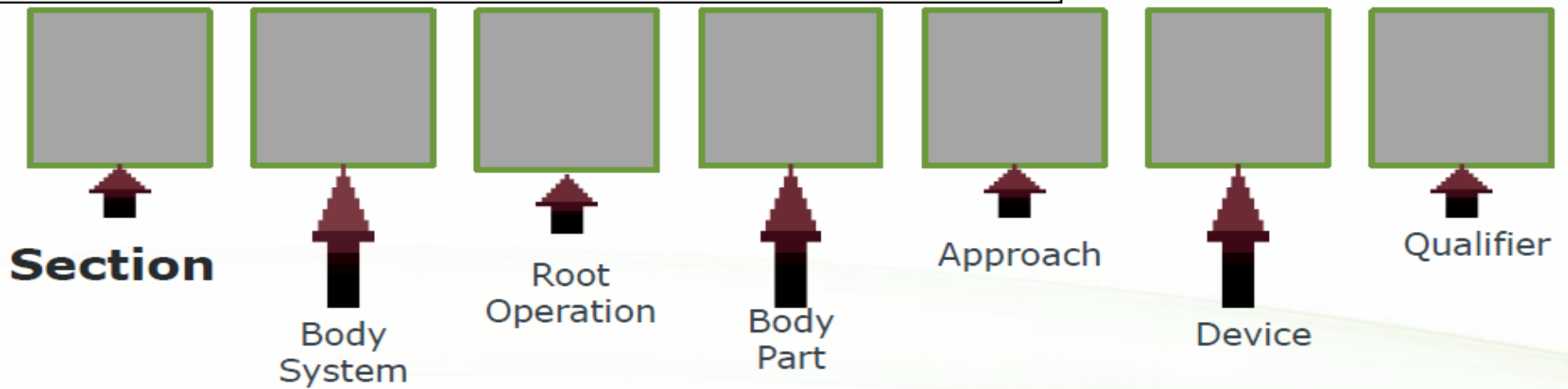
Procedure:

Open Excision of
Lesion from the
Right Achilles
Tendon

ICD-9 Code = 83.31

ICD-10 Code =

Section	0 Medical and Surgical			
Body System	L Tendons			
Operation	B Excision: Cutting out or off, without replacement, a portion of a body part			
	<i>Body Part</i>	<i>Approach</i>	<i>Device</i>	<i>Qualifier</i>
	0 Head and Neck Tendon 1 Shoulder Tendon, Right 2 Shoulder Tendon, Left 3 Upper Arm Tendon, Right 4 Upper Arm Tendon, Left 5 Lower Arm and Wrist Tendon, Right 6 Lower Arm and Wrist Tendon, Left 7 Hand Tendon, Right 8 Hand Tendon, Left 9 Trunk Tendon, Right B Trunk Tendon, Left C Thorax Tendon, Right D Thorax Tendon, Left F Abdomen Tendon, Right G Abdomen Tendon, Left H Perineum Tendon J Hip Tendon, Right K Hip Tendon, Left L Upper Leg Tendon, Right M Upper Leg Tendon, Left N Lower Leg Tendon, Right P Lower Leg Tendon, Left Q Knee Tendon, Right R Knee Tendon, Left S Ankle Tendon, Right T Ankle Tendon, Left V Foot Tendon, Right W Foot Tendon, Left	0 Open 3 Percutaneous 4 Percutaneous Endoscopic	Z No Device	X Diagnostic Z No Qualifier



ICD-10 Coding / Excision Achilles Tendon

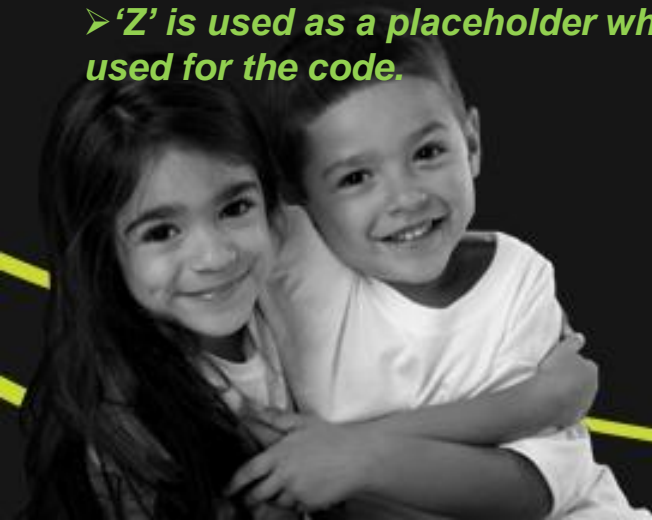
- Med-Surgical Procedure
- Tendons
- Excision
- Lower Leg Tendon, Right
- Open Procedure
- No Device was implanted
- Not a diagnostic objective

O L B N O Z Z

Excision of Right Lower Leg
Tendon, Open Approach

RECAP of ICD-10-PCS

- *The ICD-10 Procedure Code Set will be used for inpatient facility claims only.*
- *Major increase in the number of ICD-10 procedure codes (4,000 to 72,000)*
- *Coders must use the Index and the Tables to identify the accurate code.*
- *All codes are 7 characters in length.*
- *Each character has a defined meaning based on the axis or position in the code.*
- *There are 16 sections in the procedure code set. The first character in the code identifies the section.*
- *Approximately 80% of the procedure codes are in the first section, Medical and Surgical Section.*
- *New standard nomenclature replaces surgery names and procedures named after people.*
- *'Z' is used as a placeholder when the character is not used for the section or the value is not used for the code.*



Questions?



EL PASO FIRST
Health Plans inc.



Nelly Espinoza



Yvonne Grenz



Priscilla Gomez



Monica Sandoval



Chris Valdespino



Yolanda Ramirez



Betty Vara

Meeting PCU



Sonia Lopez, BS, CPC
Director of Claims
(915) 532-3778 Ext: 1097

Provider Care Unit Extension Numbers:

- 1527 – Medicaid
- 1512 – CHIP
- 1509 – Preferred Administrators
- 1504 – HCO



SAVE THE DATE



LOCAL CHAPTER EVENT

Saturday , September 21, 2013



Registration Time: 8:30 AM
Time: 9:00 AM to 4:00 PM

CEUs: 6 credits

Location:
Western Tech Conference Room
9624 Plaza Circle,
El Paso, Texas 79927

Pre Registration will commence June 2013!!!!

Presenter:

Tamra R. Lahmer, CPC, CPC-I, CCS-P, MCS-P.
National AAPC Instructor and ICD-10 Trainer

Price: \$100.00 Non Members

Price: \$ 80.00 AAPC Members