



# ICD-10 Readiness

Adriana Villagrana

# Where Does ICD-10 Fit In?

- Common reliance on complete and accurate data and clinical documentation
  - Meaningful Use
  - Quality reporting
  - Value-based purchasing
  - Hospital-acquired conditions
  - Payment reform
  - Fraud prevention and detection
  - Research
- ICD-10 will improve quality of data necessary to achieve other healthcare initiatives

# Documentation Impact on Quality Data

- Coding and sequencing
- Quality measures
- Reimbursement
- Severity-level profiles
- Risk adjustment profiles
- Present on admission reporting
- Hospital-acquired conditions

# Clinical Documentation Challenges

- Ensuring sufficient documentation to support code assignment while allowing providers to document in clinical, not coding, terms
- Need good clinical documentation – not a greater volume of documentation

# Documentation Focus Areas for ICD-10-CM

- Disease type
- Disease acuity
- Disease stage
- Site specificity
- Laterality
- Missing combination code detail
- Changes in timeframes associated with familiar codes

# Specificity Examples

- S72.044G Nondisplaced fracture of base of neck of right femur, subsequent encounter for closed fracture with delayed healing
- I69.351 Sequelae of cerebral infarction, hemiplegia and hemiparesis following cerebral infarction affecting right dominant side
- T43.621S Poisoning by amphetamines, accidental (unintentional), sequela
- M80.011A Age-related osteoporosis with current pathological fracture, right shoulder, initial encounter for fracture

# Seventh Character Determination

- Initial vs. subsequent encounter vs. sequel
  - Injuries
  - Poisoning, adverse effects, and underdosing
  - Most external cause codes (except for place of occurrence, activity or status)

# Obstetrics

- Trimester
- Number of Weeks of Gestation
- Multiple gestation complication-7<sup>th</sup> character for which fetus was affected
- Pre-Existing Conditions vs. Due to Pregnancy
- Diabetes – Diet controlled, insulin controlled or unspecified control



# Adverse Effects, Poisoning, Underdosing and Toxic Effects

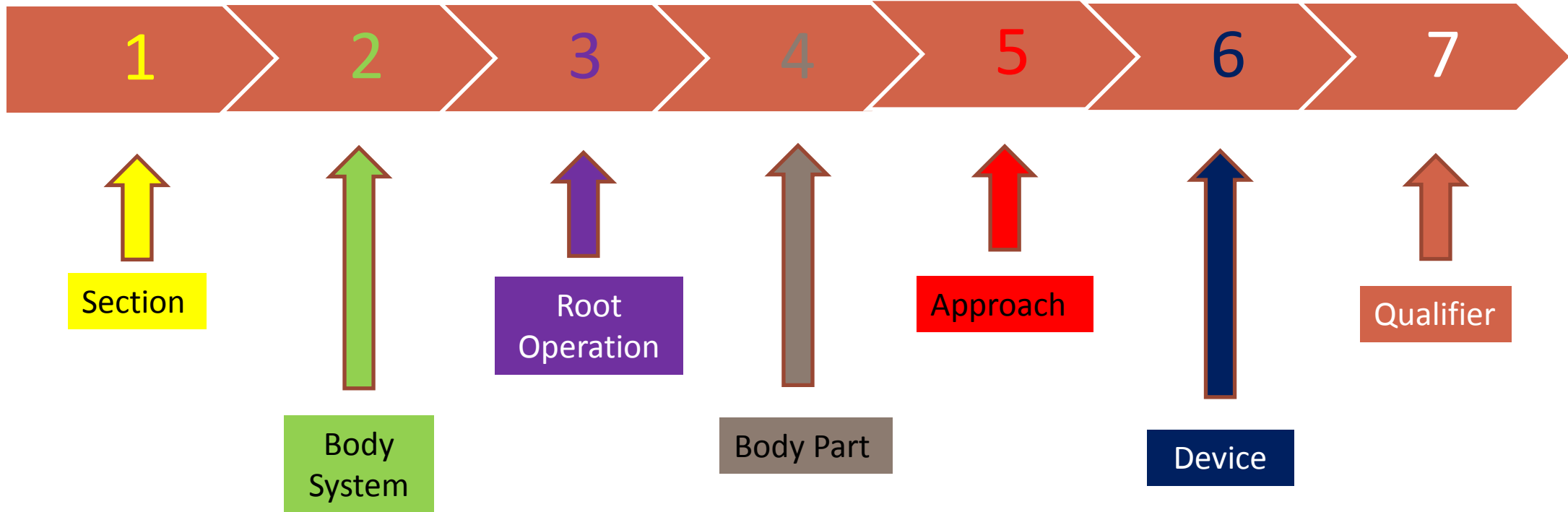
- Combination codes that include the substances related to adverse effects, poisonings, toxic effects and underdosing, as well as the external cause
  - Will require knowing intent: accidental, intentional self-harm, assault, undetermined

# Underdosing

- Taking less of a medication than is prescribed by the provider or manufacturer
- Noncompliance or complication of care codes are used with underdosing code to indicate intent, if known

# ICD-10-PCS

# ICD-10-PCS – Characters (Med/Surg)



All 7 characters of an ICD-10-PCS code are required to code.  
Are all of them documented today?

# ICD-9-CM Suture of Artery: One code 39.31



ICD-10-PCS Repair of Artery: 195 codes

Approach

0-Open

3-Percutaneous

4-Percutaneous Endoscopic

Body

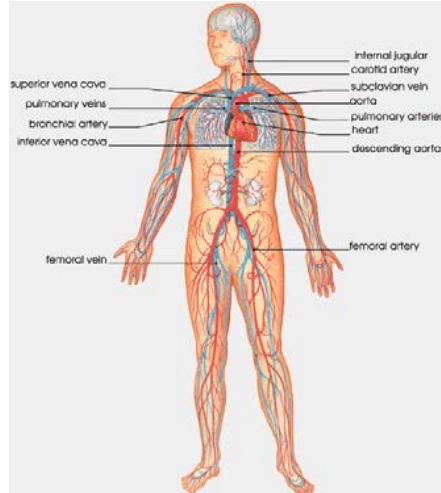
Abdominal Aorta

Common Carotid Artery

Radial Artery



65 Different Arteries



# ICD-10-PCS Documentation Considerations

- Root Operation
- Provider documentation must describe the surgery in detail in order for the coder to select the appropriate root operation
- Approach
- No defaults for unspecified approach
- Specific body part

Laterality (e.g. right ovary, left ovary, or bilateral ovaries; no default for unspecified ovary; same for fallopian tubes) Greater granularity (vessels, muscles, nerves)

# ICD-10-PCS Documentation Considerations Cont..

- ICD-10-CM/PCS codes are considerably more detailed than ICD-9-CM
- Examples:
  - Laterality
  - Encounter Type (initial, subsequent, sequel)
  - Anatomical Detail
  - Type of Injury
  - Severity
  - Approach

# Clinical Documentation Improvement Strategies

- Identify and implement changes in documentation capture processes (such as use of EHR documentation templates and prompts) that would facilitate improvements in clinical documentation practices
  - Eases ICD-10 transition and provider acceptance
- Key to quality care is to focus on capturing quality information at the point of care
- Improving clinical documentation now has immediate benefits
- Educate Staff



# Important EHR templates to consider

- Laterality
- Devices
- Encounter type (initial, subsequent, sequela, routine healing, delayed healing)
- Anatomic details
- Severity
- Disease relationships

# ICD-10 Readiness / How Ready Are You?



# ICD-10 Implementation

- Phase One
  - Perform impact Assessment
- Phase Two
  - Prepare for Implementation
- Phase Three
  - Prepare for GO LIVE (you should be here)
- Phase Four
  - Post-Implementation Status

# Phase One

## Perform Impact Assessment

- Establish an ICD-10 Committee
- Develop strategies & goals
- Determine organizational readiness
- Contact your Vendors
- Review the budget

# Phase Two

## Prepare for Implementation

- Upgrade Plans
- Data analysis-Impact
- Contact Payers
- Educate Staff (ICD-10 training)

# Phase Three

## Prepare for Go Live

- System upgrades should be completed
- Test all impacted systems
- Educate all users
- Develop a communication plan with Vendors & Payers

# Phase Four

## Post Implementation

- Monitor Claims
- Monitor your systems
- Audit coding accuracy
- Address problems (IMMEDIATELY)
- Evaluate Data for accuracy (reports)
- Evaluate financial Impact
- Expect the Unexpected
- Finally—Celebrate

# Where Are You At?

- We have not begun
- We have upgraded some software
- We have finished upgrading software, have not tested
- We started testing phase
- Testing is complete
- We are READY



# Don't Panic



# Resources

## AHIMA

[www.ahima.org](http://www.ahima.org)

- Clinical Documentation Guidance for ICD-10-CM/PCS
- Using CDI Programs to Improve Acute Care Clinical Documentation in Preparation for ICD-10-CM/PCS
- ICD-10-CM/PCS Implementation Toolkit
- Electronic Documentation Templates Support ICD-10-CM/PCS Implementation

# Documentation Resources

- **ICD-10-CM/PCS Documentation Tips** [www.ahima.org/icd10](http://www.ahima.org/icd10)

## Clinical Documentation Improvement

### Pneumonia

- Document causative organism (if known)
- Document mechanism:
  - Aspiration
  - Ventilator-associated
  - Radiation-induced
  - Other (specify)
- Document any associated illness:
  - Respiratory failure
  - Sepsis
  - Underlying lung disease
  - Other (specify)
- Document history of tobacco use—present or past

# Resources: CMS



<http://cms.gov/Medicare/Coding/ICD10/index.html>

## **Road to 10: CMS Online Tool for Small Practices**

Jumpstart your ICD-10 transition with Road to 10, <http://www.roadto10.org/>, an online resource built with input from providers in small practices. “Road to 10” includes specialty references and helps providers build ICD-10 action plans tailored for their practice needs.

## **CMS ICD-10 Quick Start Guide**

Quick Start Guide outlines 5 steps health care professionals should take to prepare for ICD-10 by the October 1, 2015, compliance date.

Additional resources are also available on the [Provider Resources](http://www.cms.gov/Medicare/Coding/ICD10/ProviderResources.html) <http://www.cms.gov/Medicare/Coding/ICD10/ProviderResources.html>

# Resources: TMHP



TEXAS MEDICAID & HEALTHCARE PARTNERSHIP  
A STATE MEDICAID CONTRACTOR

<http://www.tmhp.com/Pages/CodeUpdates/ICD-10.aspx>

## **ICD-10 benefit changes for Texas Medicaid and the CSHCN Services Program**

[http://www.tmhp.com/Pages/CodeUpdates/ICD10\\_benefit%20updates.aspx](http://www.tmhp.com/Pages/CodeUpdates/ICD10_benefit%20updates.aspx)

Providers are encouraged to monitor this website for benefit changes related to ICD-10 as they become available. The Benefits website contains *information by service type.*

# Additional Resources



<https://www.aapc.com/icd-10/>

ICD-10 transition will affect every aspect of your practice. Learning a new code set and upgrading your software is only the beginning.

ICD-10 Training by Position: Coder/Auditor, Practice Manager/Admin, Physician

<http://www.ahima.org/>



Achieving ICD-10-CM/PCS Compliance in 2015: Staying the Course for Better Healthcare

ICD-10 Implementation Tool kit

ICD-10 Preparation Checklist CMS Road To 10 Resources MLN Connects

ICD-10 Coding Basics Video

ICD-10 Playbook Top

ICD-10-CM/PCS Questions



